



Portimão - Portugal

8TH GENERATION XXI: ESC IN CONTACT WITH EUROPE

2025-2026

Coordinating organisation
Portimão Municipal Council

Partner organisation
DYPALL Network

Duration
30th September 2025
30th June 2026

Location
Portimão, Algarve region,
Portugal



TABLE OF CONTENTS

- Description of the project
- Organisers and partners
- The city
- First days, what to expect?
- What to visit?
- Work places
- Logistical information
- Accommodation
- Useful information
- Contacts

Useful TIPS



- Be motivated
- Exercise your English level
- Be passionate
- Be proactive

Description of the project

The project, coordinated by the Municipality of Portimão, follows the need to continue to raise awareness among young people about the possibility of change and the search for better opportunities, but also to understand local challenges and connect them with Europe and the global environment.

"Generation XXI: ESC in contact with Europe"

focuses on YOUTH participation through



- non-formal learning
- mobility and youth policies at the local level

The project will host:

3 volunteers for a period of **9 months** from 30th Sept 2025 to 30th June 2026.



Hosting and Coordinating organisation

The Municipality of Portimão is responsible for the implementation of socio-economic policies in the city. Activities in the framework of the Erasmus+ programme are under the responsibility of the Youth and Sports Division of the Municipality.

Several projects in the area of youth were implemented with the support of the Municipality:



- StartWork, an entrepreneurship, job and training opportunities fair
- Youth Council
- Loja Ponto Já, the local youth center
- Férias Desportivas, a summer activity involving more than 1000 young people
- Vela Solidária

Find out more about the Municipality of Portimão at this [link!](#)



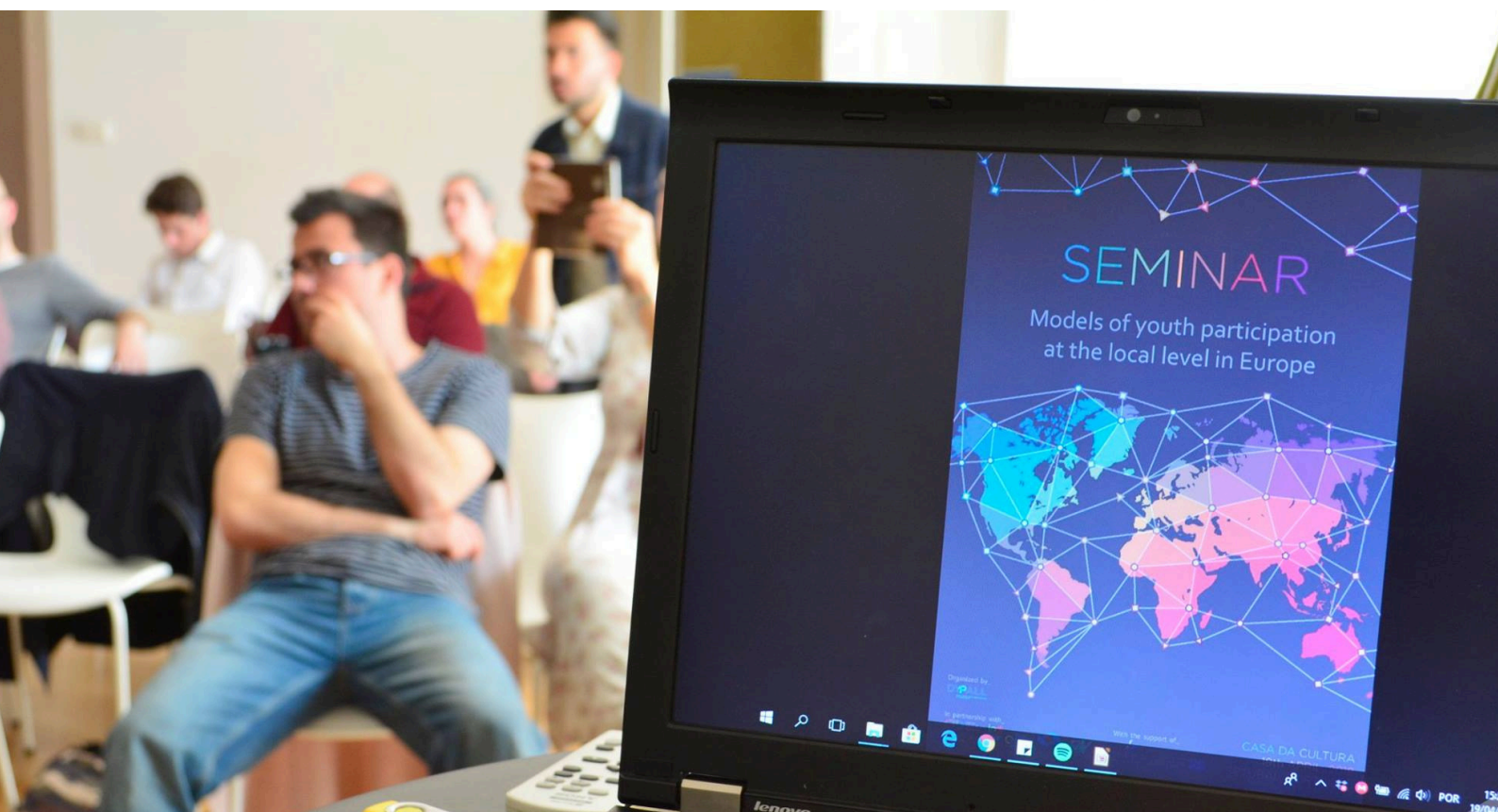
Partner organisation

DYPALL Network is the Municipality of Portimão's partner taking care of the practical, support, training, and follow-up arrangements during your volunteering project.

DYPALL Network (Developing Youth Participation at Local Level) is a **European network** of over 80 civil society organisations and local authorities from more than 30 countries, that aims to involve young people in decision-making processes at the local level, and thus enable municipal and regional authorities to address the needs and interests of youth, **engage young people** as active actors of problem-solving and increase the level of ownership, commitment and involvement of an important part of our communities.

DYPALL Network stands for the creation of effective and sustainable **involvement of youth** in decision-making with local authorities through the development of strategies and building structures and relations of trust between actors.

Find more informations:

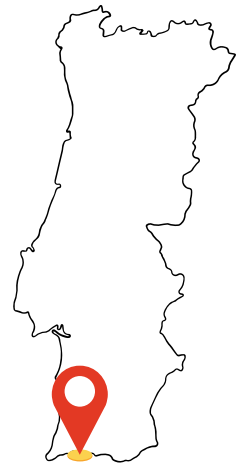


The city

PORTIMÃO

Portimão is a port city and a municipality in the district of Faro, in the Algarve region of southern Portugal, which is residence of 44.000 inhabitants.

It's known for its old quarter, busy marina and proximity to many beaches. Historically a **fishing** and shipbuilding centre, it has nonetheless developed into a strong **tourist-oriented** centre along the southern coast.



First days, what to expect?

The first days of the project will be dedicated to settling in and learning more about the city, the working places, and your roles.

During the first days, you will attend an “Induction Training” given by DYPALL Network staff.

This training will allow you to get more information about the places you will be working at, your project, and your supervisors.

You will also have the chance to get to know the other international volunteers, the city, and all the places you will need to know to better experience Portimão.

Finally, you will understand how the programme works, what are its rules and what the Municipality of Portimão and DYPALL Network is expecting from you.



What to visit?



MUSEU DE PORTIMÃO

The sardine museum is one of the best places to learn more about the history of the town, so inextricably linked to the canning industry.



FORTALEZA DE SANTA CATARINA

Located in the marina of Portimão, it is one of the most charming places in Portimão from which to enjoy a beautiful sunset.



ALVOR

A small fishing village still imbued with that old Portuguese atmosphere. Several nature trails depart from here. Nice for a dinner out and karaoke nights!



PRAIA DA ROCHA

Relaxing by day, but lively by night. It is the centre of nightlife, with pubs, bars, restaurants and all kinds of entertainment.

Work places

MUSEU DE PORTIMÃO

The Museum of Portimão is a permanent observatory and a structure of cultural mediation to investigate, conserve, interpret, disseminate and enhance the most relevant material and immaterial testimonies of the history, heritage, territory, memory and identity of the local community and regional, in its interaction with the world.



Main objectives:

- Rehabilitate industrial and cultural heritage;
- Enhance the city-river relationship;
- Interpret and reinforce the historical, territorial and social evolution of the community;
- Boosting the formation of new audiences, developing a quality cultural offer.

Address:

Museu de Portimão

Rua D. Carlos I, 8500

607 Portimão



Work places

PEDAGOGICAL FARM

This is an educational and recreational project with the aim to allow the children to get to know better the rural world and awaken them to nature and environmental awareness.



Main activities:

- Workshop with children;
- Horticulture;
- Easter and Summer camp for kids;
- Animal Assisted Therapy;
- Feed the animals and take care of them;
- Cooking workshop using the social oven.

Address:

Quinta Pedagógica

Aldeia Nova da Boavista,

8500 Portimão



Work places

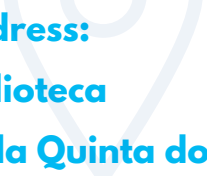
MUNICIPAL LIBRARY

Other than the normal library services, the municipal library is a space that promotes and develops services and activities that contribute to the dissemination of culture, information, and knowledge.



Main objectives:

- Planning, implementation and evaluation of cultural and artistic events;
- Visited tours
- Workshops and other activities



Address:
Biblioteca
R. da Quinta do
Bpo., 8500-729
Portimão



Work places

LOJA PONTO JÁ (YOUTH CENTRE) & LIGHTHOUSE

This is an educational and recreational project with the aim to organise activities and events for young people. Book clubs, game tournaments, study sessions and much more. Lighthouse project's aim is to help disadvantaged children with homework, and provide them with a social centre where it is possible to build friendships and play games together.



Main activities:

- Provide information connected to mobility;
- Propose activities and spend time together with young people;
- Design and Communication;
- Social Media Management.

Address:

Ponto JA

**Avenida São João de Deus
15, 8500-509 Portimão**

Address:

Lighthouse

**Edifício Abicada, R. António Rocha
Silveira Loja G2, 8500-454Portimão**



Logistical information

HOW TO GET TO PORTIMÃO FROM LISBON

Once you arrive at the Lisbon airport, you simply have to go out and follow the **metro** indications (the metro is very close, when you go outside just turn right and take the escalator)



A. Lisbon airport - Lisbon bus station Oriente (red line)

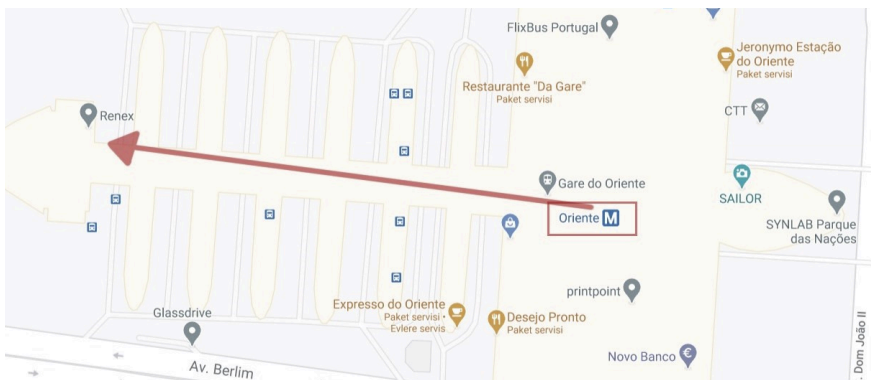
Tickets: 1,80 (+ 0,50 metro card fee)

Website link [here](#)

Get on the "Aeroporto" stop, wait 3 stops and get off at the "Oriente" stop.

Stops: Aeroporto -> Encarnação -> Moscavide -> Oriente

B. Bus Lisbon Oriente - Portimão



Exit the metro and walk through the bus station until the lanes reserved to **Rede Expressos** lines.

Tickets for Portimão Link [here](#).

IMPORTANT!! In order to be reimbursed, you need to keep all the tickets you use. The ESC programme does not allow first-class travel on public transport or the use of taxi/Uber/Bolt

Logistical information

HOW TO GET TO PORTIMÃO FROM FARO

The public bus connection with Faro airport is provided by the **Próximo company circuit 16 bus**. Once outside the terminal just follow the signs to the bus stop.



Faro airport - Faro train and bus station

Tickets: 2,25€ - buy it directly on the bus (in cash – change available).

Bus route 16 (Faro city centre – Faro Airport) leads you to Faro Bus Station. The trip takes about 20 minutes.

Link [here](#)

Faro train station - Portimão

It is possible to get to Faro **train station** from the bus terminal by foot since it is located just 300m away. From there, get a train to Portimão (recommended). The trip takes around 1 hour. You can purchase the ticket online or at the ticket office. If you are 25 or younger, show your ID for youth discounts.

Link [here](#)

Faro bus station - Portimão

From the terminal station at Faro city centre, the **EVA Bus** company provides several connections to destinations in the country.

To check the prices and timetables you should look for **Transrapido_Faro-Lagos**. The tickets can be purchased online or at the ticket office in the terminal station.

Link [here](#)

IMPORTANT!! In order to be reimbursed, you need to keep all the tickets you use. If you choose to move with Uber, we will not be able to process your refund.



Arrival and accommodation



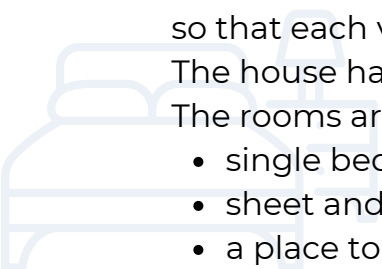
**Rua Professor Doutor Montalvão Marques,
Lote 4, 1º Dto, 8500-722 Portimão**


At your arrival in Portimão, **Marta Monteiro**, ESC Project Coordinator will pick you up at the bus station, train station, or other place of arrival in Portimão, and she will accompany you to the accommodation.

The **rooms** will be selected by lottery at the arrival of each volunteer, so that each volunteer can arrange their belongings in the room.

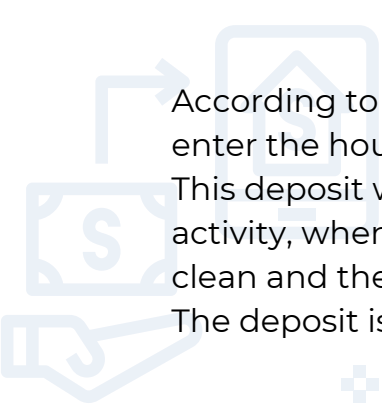
The house has three rooms, two *of which will be shared*.

The rooms are equipped with:

- 
- single beds
 - sheet and a duvet
 - a place to store clothes
 - two towels, one small (hand towel) and one big (shower towel).



The **kitchen** is provided with basic equipment namely refrigerator and stove and some utensils such as cookware, plates, cutlery and tupperwares.



According to our rules, you will have to pay a **deposit** when you enter the house.

This deposit will be reimbursed on the last day of the mobility activity, when the supervisor will have checked that the house is clean and there isn't anything broken or missing.

The deposit is 50 euros, divided in two months.

Don't forget to bring:

- European Health and ID Card valid for the whole duration of the mobility activity.

Working mobile phone, with an active Internet connection

- (independent from wi-fi). In case the phone does not have an internet connection, or it doesn't allow roaming, a Portuguese card will be required.

In Portimão, the weather is sunny most of the year, but by being on the Atlantic Ocean, it is normal to have windy days. Therefore, we

- recommend that you bring suitable clothing for these weather conditions.



Positive attitude - very important!

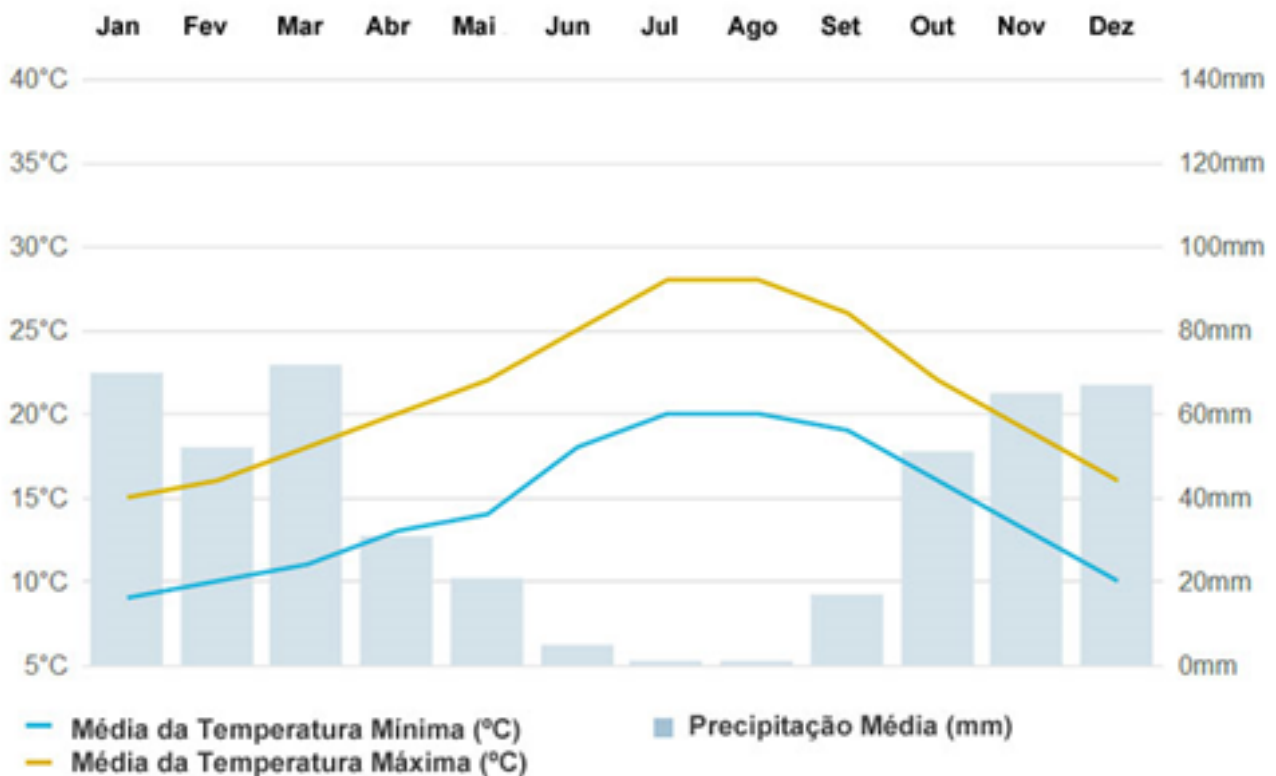
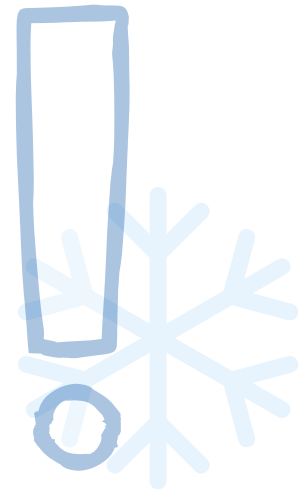


Temperatures

In the image below, there are the average temperatures in Portimão. We advise you to bring clothes according to the temperatures of the months that you are going to spend here.

Keep in consideration that the house does not have a heating system and it can happen that during the winter nights the temperature goes under 5°C.

We recommend warm clothes and a hot water bag!



Contacts

MARTA MONTEIRO - PROJECT COORDINATOR

+351 969 169 212

marta.monteiro@dypall.com

MARIA AVELINO - FINANCIAL ADMINISTRATOR

+351 967 708 918

maria.avelino@dypall.com



And last but not least:

FEEL FREE TO ASK ANY FURTHER INFORMATION!!!

